



# HIGH REACH DEMOLITION BOOM



## DEMOLITION BOOM

With the greater emphasis on work environment safety and stricter regulation, the demolition boom is fast becoming the choice attachment for demolishing old buildings.

Replacing the traditional and accident-prone practice in which standard crawler excavators are lifted onto the building to carry out highly dangerous tasks where a minor misstep by the operator could have disastrous consequences, the demolition boom has changed the entire concept of tearing down buildings, not only improving the overall safety standard but also extending the working radius and reach of the attachment.

An ultra-high reach demolition boom is a purpose-built attachment to elevate demolition tool in tearing down multi-story buildings. The beauty of the demolition boom is its ease of positioning and flexibility in the maneuvering of work tools in carrying out primary and secondary demolition jobs safely.

EIK new range of high reach demolition boom is the brainchild of more than 10 years of cumulative experience. It has numerous improvements ranging from structural integrity, speed of deployment, modularity, safety, to name a few. Our attachments are engineered for performance, reliability, and low total cost of ownership in mind. We fully understand the harsh working requirement, hence there is no compromise in the materials used for such a highly specialized piece of attachment.

The main boom can be designed with a modular quick coupling joint for efficient mounting and dismantling, as well as ease of ground handling and transportation.



**Quality Cylinder & Safety Valve**

*OEM grades cylinders cater for the harsh working environment. Cylinders installed with load hold valve for enhance safe operation.*



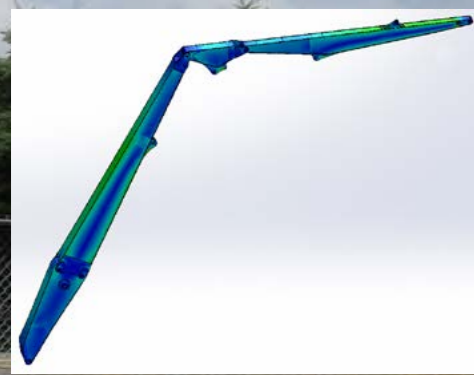
**Modular Joint**

*Optional hydraulic "In-Pin" drastically reduced the time for assembly and disassembly. The process is such a breeze and improved productivity.*

*Hydraulic "In-pin" is embedded within the boom structure, and well protected.*

**Proven Design**

*more than 10 years of experience with proven reliability. Boom and stick structures are designed extensively use of high strength steel for durability and reliability.*



**Auxiliary Lines for attachment**

*2x pairs of Auxiliary lines with high pressure ball valves. 1x drain lines.*

**Guide Pin**

*For quick alignment of modular during installation. Simple and yet effective.*



**Tilting Cabin and guard**

*Tilting mechanism allows operator to operate machine at the most optimum angle, visibility and protection.*



We design and customize demolition solutions for every make and model of hydraulic excavator, starting from 10 metric tons (22,000 lbs) mini-excavator and upward. Depending on your excavator size, the demolition boom can easily handle work tools ranging from 0.5 (1,100 lbs) to 4 tons (8,800 lbs) of weight.

We do undertake an entire turnkey solution in which we convert your existing excavator to full-fledged demolition equipment. The conversion is not restricted to the followings:

- Counterweight.
- Operator cab protection.
- Tilting or elevation of operator cab.
- Auxiliary hydraulic lines for attachment
- Widening and lengthening of the undercarriage.
- Safety check valve installation on hydraulic cylinders.
- Full commissioning of newly converted machine.

We offer our customers the option to install safety check valves for the hydraulic cylinders as an additional safety feature. In situations where the hydraulic system fails, the safety valves will lock and hold the load in position. Under no circumstances should safety be compromised where affordable, reliable and proven technology is readily available. The installation is designed not to have any effect whatsoever on the normal operating function of an excavator.



## APPLICATION

- Demolishing high-rise buildings and structures.
- Typically attached to a hydraulic breaker, multi-processor, or hydraulic shear.

## FEATURES

- Use of high strength steel for increased reliability.
- Design is simulated extensively, ensuring design integrity and detecting potential stress and fatigue points.
- Hydraulic operated modular joint on the main boom, ease of detaching for transportation.
- Cylinders installed with load hold safety valves.

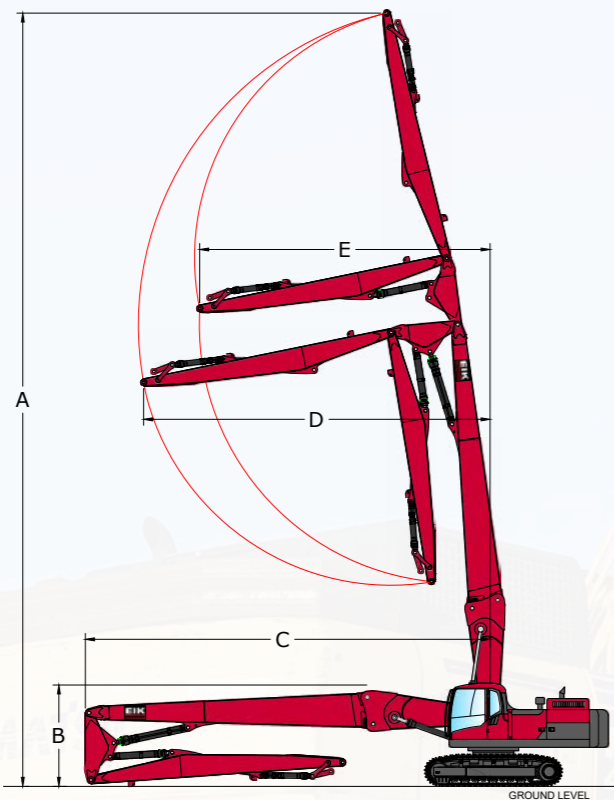


## Demolition Boom Package

Each Demolition Boom package comes standard with the following items:

- 1x main boom with mechanical modular joint with full set of hydraulic lines
- 1x 2nd section with full set of hydraulic lines, hoses and pins
- 1x 3rd section arm with full set of hydraulic lines
- 5x lines of auxiliary hydraulic lines for attachment
- 2x OEM grade cylinder
- 2x load hold safety valve
- 1x linkage set

## Standard Design of Demolition Boom

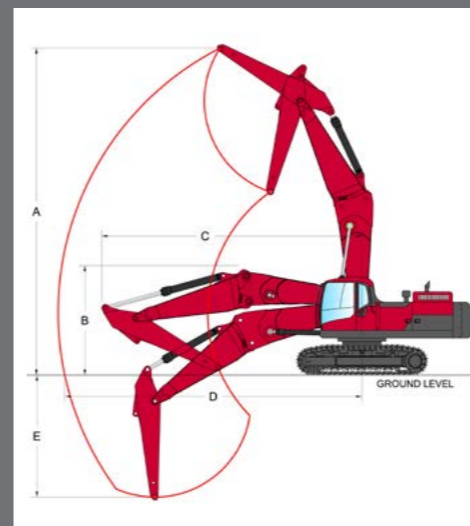


Excavator Operating Weight	A		B		C		D		E		Maximum Tool Weights	
	m	ft	m	ft	m	ft	m	ft	m	ft	ton	lb
20 - 22 ton	17.0	56'	2.5	8' 2"	8.6	28' 2"	7.5	24' 7"	6.3	20' 7"	1.2	2,640
27 - 32 ton	18.5	60'	2.8	9' 2"	9.8	32' 1"	8.1	26' 7"	6.9	22' 7"	1.5	3,300
33 - 38 ton	21.0	69'	3.0	9' 9"	10.8	35' 4"	9.2	30' 2"	7.8	25' 7"	2.0	4,400
46 - 55 ton	25.0	82'	3.3	10' 9"	13.2	43' 3"	11.1	36' 4"	9.3	30' 5"	2.0	4,400
60 - 68 ton	29.0	95'	3.5	11' 6"	15.5	50' 8"	12.8	42' 0"	11.5	37' 7"	2.0	4,400
70 - 78 ton	31.0	101'	3.9	12' 9"	16.7	54' 9"	13.8	45' 3"	11.9	39' 0"	2.0	4,400
80 - 95 ton	33.5	110'	4.0	13' 1"	18.5	60' 8"	15.5	51' 0"	14.0	45' 10"	2.0	4,400

\* The above specifications are for reference only, actual working range may vary from machine models.  
 \*\* For the benefit of continuous product improvement, specifications are subjected to change without prior notice.

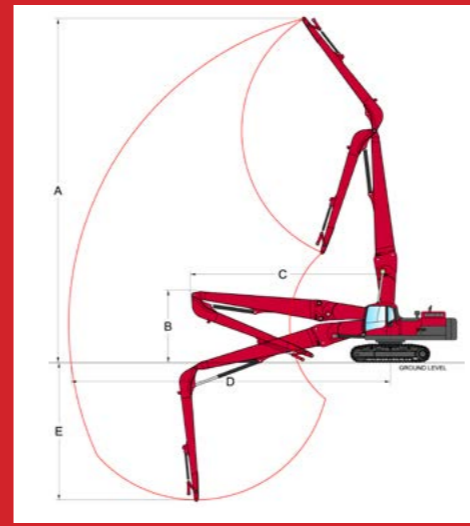
## Optional Demolition Boom Package

### Standard Boom with Modular Joint



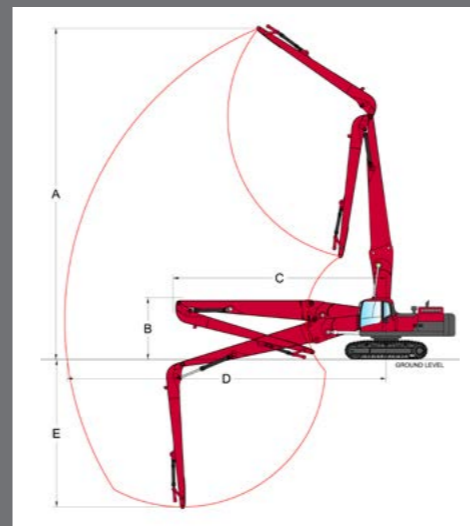
Excavator Operating Weight	A		B		C		D		E	
	m	ft	m	ft	m	ft	m	ft	m	ft
33 - 38 ton	10.4	34' 1"	3.5	11' 6"	8.6	28' 2"	10.2	33' 6"	5.6	18' 4"
40 - 53 ton	11.5	37' 8"	3.8	12' 6"	9.2	30' 2"	10.4	34' 1"	4.3	14' 1"

### Material Handling Single Cylinder with Modular Joint



Excavator Operating Weight	A		B		C		D		E	
	m	ft	m	ft	m	ft	m	ft	m	ft
33 - 38 ton	18	59' 0"	3.4	11' 2"	11.8	38' 7"	17.9	58' 8"	10.1	10' 1"

### Material Handling Dual Cylinder with Modular Joint



Excavator Operating Weight	A		B		C		D		E	
	m	ft	m	ft	m	ft	m	ft	m	ft
40 - 53 ton	18.5	60' 8"	3.5	11' 6"	11.8	38' 8"	17.7	58' 1"	8.3	27' 2"

\* The above specifications are for reference only, actual working range may vary from machine models.  
 \*\* For the benefit of continuous product improvement, specifications are subjected to change without prior notice.



# EIK GROUP OF COMPANIES

## **EIK Engineering Sdn Bhd (HQ)**

No. 10, Jalan SiLC 1/4,  
Kawasan Perindustrian SiLC,  
79200, Iskandar Puteri, Johor, Malaysia  
Tel: +607 - 531 9922  
Fax: +607 - 531 9919  
Website : [www.eikengineering.com](http://www.eikengineering.com)  
Email: [sales@eikengineering.com.my](mailto:sales@eikengineering.com.my)  
/ [info@eikengineering.com](mailto:info@eikengineering.com)

## **AMP Engineering Works Sdn Bhd**

No 28, Jalan Astaka U8/84A,  
Bukit Jelutong, 40150 Shah Alam, Selangor  
Tel: +603 - 7859 9221  
Fax: +603 - 7859 9231  
Website : [www.ampdredging.com](http://www.ampdredging.com)  
Email: [ampoffice99@gmail.com](mailto:ampoffice99@gmail.com)

## **EIK Lam Engineering Sdn Bhd**

24, Jalan Mega 1/4,  
Taman Perindustrian Nusa Cemerlang,  
79200 Nusajaya, Johor, Malaysia  
Tel: +607 - 554 2700  
Fax: +607 - 554 1785  
Email: [sales@eiklam.com.my](mailto:sales@eiklam.com.my)

## **TCL Machinery (M) Sdn Bhd**

No. 9, Jalan Tiong Emas 6,  
Kawasan Perindustrian Tiong Nam,  
81100 Johor Bahru, Johor, Malaysia.  
Tel: +607 - 361 6546/ +607 - 364 8695  
Fax : +607 - 364 8679  
Website : [www.tcl-machinery.com](http://www.tcl-machinery.com)  
Email: [enquiry@tcl-machinery.com](mailto:enquiry@tcl-machinery.com)

## REGIONAL SALES OFFICES

### **EIK Solutions LLC (United States)**

14430 Grant Road, Cypress, Texas  
77429 United States  
Tel: +1 832-850-4590  
Website : [www.eiksolutions.com](http://www.eiksolutions.com)  
Email: [sales@eiksolutions.com](mailto:sales@eiksolutions.com)

### **EIK Engineering Pte. Ltd (Singapore)**

135 Jurong Gateway Road, #03-315  
Singapore 600135  
Tel: +65 - 9815 9685  
Email: [sales@eikengineering.com](mailto:sales@eikengineering.com)  
/ [info@eikengineering.com](mailto:info@eikengineering.com)

### **EIK Engineering Sdn Bhd (Kuala Lumpur Branch)**

No 28, Jalan Astaka U8/84A,  
Bukit Jelutong, 40150 Shah Alam, Selangor  
Tel: +603 - 7859 9221  
Fax: +603 - 7859 9231  
Email: [sales\\_kl@eikengineering.com.my](mailto:sales_kl@eikengineering.com.my)

### **EIK Engineering Sdn Bhd (Sarawak Branch)**

Lot 1176, Section 66  
Kuching Town Land District  
Jalan Utama, Pending Industrial Estate  
93450 Kuching, Sarawak, Malaysia  
Tel: +6082 - 335 922  
Fax: +6082 - 345 922  
Email: [sales\\_sawarak@eikengineering.com.my](mailto:sales_sawarak@eikengineering.com.my)