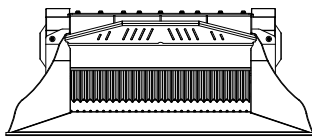
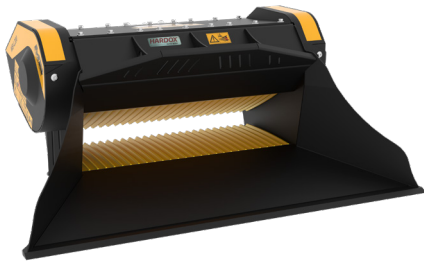
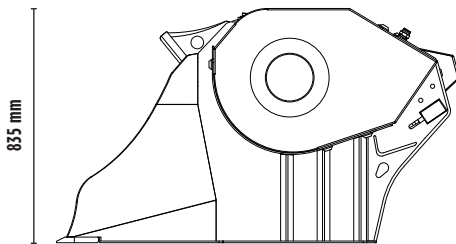


CRUSHER BUCKET

MB-L200 S2



2030 mm






835 mm

1435 mm



SPECIFICATIONS

	Recommended excavator	ton	12 - 17
	Recommended backhoe loader/loader*	ton	7 - 12
	Recommended skid steer loader*	ton	6 - 8
	Weight	ton	1,50
	Load Capacity	m ³	0,43
	Pressure	bar	200 - 280
	Back pressure	bar	< 10
	Oil flow rate**	l/min	120 - 200
	Mouth width	mm	1185
	Mouth height	mm	280

* Please verify machine's Rated Operating Capacity.

** The minimum hydraulic flow rate value must be alongside the required operating pressure

ACCESSORIES

Dust suppression kit

Hour meter

24 month warranty

APPLICATION AREAS



DEMOLITIONS



ROAD WORKS



RECYCLING AGGREGATES



URBAN CONSTRUCTION SITES