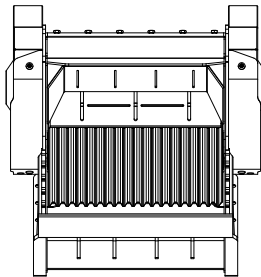
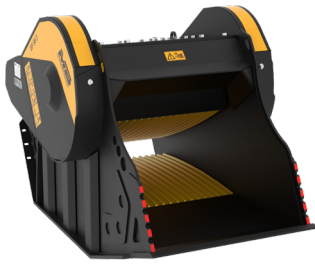
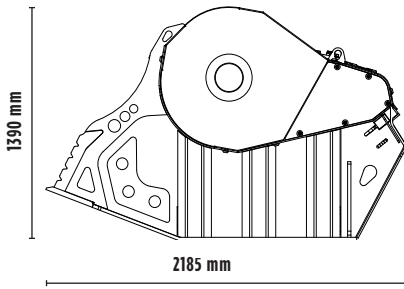


CRUSHER BUCKET

BF90.3 S4



1340 mm



1390 mm

2185 mm



SPECIFICATIONS



Recommended excavator	ton	21 - 32
Weight	ton	3,50
Load capacity	m ³	0,90
Pressure	bar	220 - 280
Back pressure	bar	< 10
Oil flow rate*	l/min	180 - 220
Mouth width	mm	910
Mouth height	mm	540

* The minimum hydraulic flow rate value must be alongside the required operating pressure.

ACCESSORIES

Dust suppression kit	Hour meter
Iron separator	24 month warranty

APPLICATION AREAS

