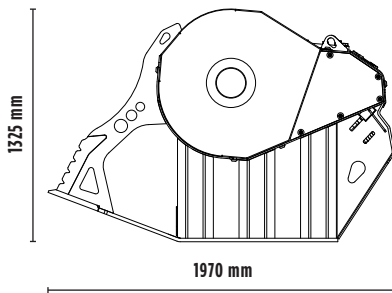
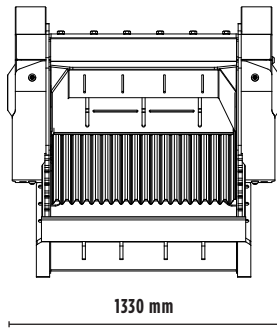
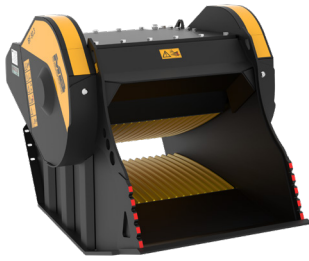



CRUSHER BUCKET

BF80.3 S4



SPECIFICATIONS

 Recommended excavator	ton	18,5 - 29
Weight	ton	3,00
Load capacity	m ³	0,70
Pressure	bar	220 - 280
Back pressure	bar	< 10
Oil flow rate*	l/min	150 - 220
Mouth width	mm	880
Mouth height	mm	510

* The minimum hydraulic flow rate value must be alongside the required operating pressure.

ACCESSORIES

Dust suppression kit	Hour meter
Iron separator	24 month warranty

APPLICATION AREAS

